

فهرست کارتهای SETA

صورتی

SYMBOLS, TERMS & INTERVALS

Double Bar Line . . .	1
Repeat Sign	2
Piano	3
Forte	4
Bass Clef	5
Treble Clef	6
Mezzo Forte	7
Mezzo Piano	8
Adagio	9
Andante	10
Allegro	11
D.C. al Fine	12
Tied Notes	13

Slur	1
Staccato	1
Crescendo	1
Decrescendo	1
8va	1
Fortissimo	1
Sharp	2
Flat	2
Accent	2
Ritard	2
Natural	2
Fermata	2
Pianissimo	2
2nd	2
2nd	2
3rd	2
3rd	3
4th	3
4th	3
5th	3
5th	3
6th	3
6th	3
7th	3
7th	3
8th (octave)	3
8th (octave)	4



سفيد

NOTES & READING PATTERNS

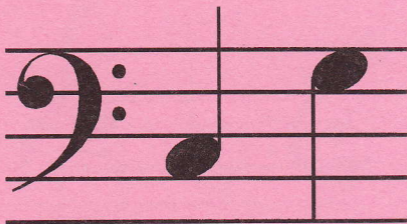
Low Leger C	1
Low Leger D	2
Low Leger E	3
F	4
G	5
A	6
B	7
C	8
D	9
E	10
F	11
G	12
A	13
B	14
Middle C	15
D	16
E	17
F	18
G	19
A	20
B	21
C	22
D	23
E	24
F	25
G	26

High Leger A	27
High Leger B	28
High Leger C	29
Middle Leger B	30
Middle Leger A	31
Middle Leger E	32
Middle Leger D	33
Three-Note Reading Patterns	34-40

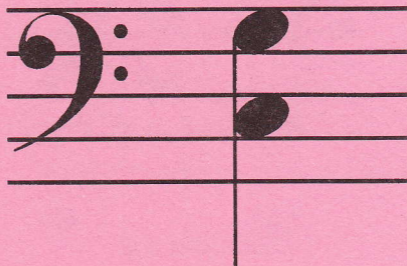
زرد

VALUES & RHYTHM PATTERNS

Description	1
Quarter Note	2
Quarter Rest	3
Whole Note	4
Whole Rest	5
Half Note	6
Half Rest	7
Dotted Half Note	8
4/4 Time	9
3/4 Time	10
Two-Measure Rhythm Patterns: 11-27	
Four-Measure Rhythm Patterns: 28-40	



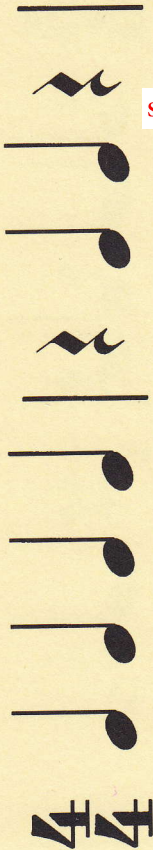
Shiraz-Beethoven.ir





Shiraz-Beethoven.ir

Shiraz-Beethoven.ir



4/4

