

Alfred's Basic Piano Library

Piano

Theory Book

Level 1A

Instructions for Use

1. This THEORY BOOK may be assigned at the student's second lesson, or when the student reaches page 11 of the LESSON BOOK 1A.
2. In cases where the student goes beyond page 11 at the first lesson, the teacher may elect to hold the THEORY BOOK in reserve until the second lesson. If, however, the student expresses an interest in doing additional study at home, it is advisable to assign the appropriate pages at the end of the first lesson.
3. This book is coordinated page by page with LESSON BOOK 1A, and all assignments should be made according to the instructions in the upper right hand corner of each page of the THEORY BOOK.
4. Theory lessons should be completed by the student *at home*. All assigned pages should be checked by the teacher at the next lesson.
5. Supplementary use of FLASH CARDS (available separately) is recommended.

Willard A. Palmer • Morton Manus • Amanda Vick Lethco



Third Edition

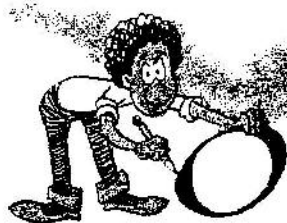
Copyright © MCMXCIX by Alfred Publishing Co., Inc.
All rights reserved. Printed in USA.

ISBN 0-88284-813-5

Illustrations by David Silverman (Painted by Cheryl Hennigar)

Shiraz-Beethoven.ir

Time to Count!



Draw an oval.
THIS IS A WHOLE NOTE!



Draw a stem.
IT'S A HALF NOTE!

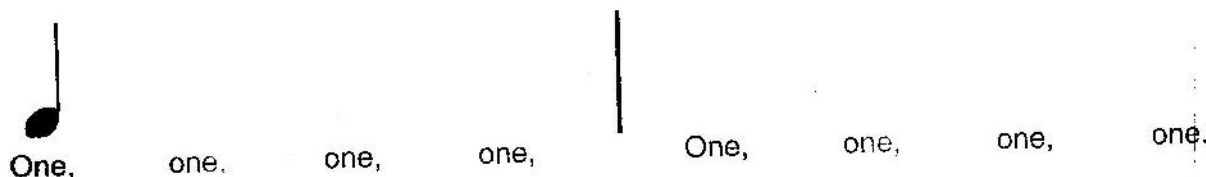


Make it black.
IT'S A QUARTER NOTE!

1. Draw 7 more **WHOLE NOTES** in the space below.

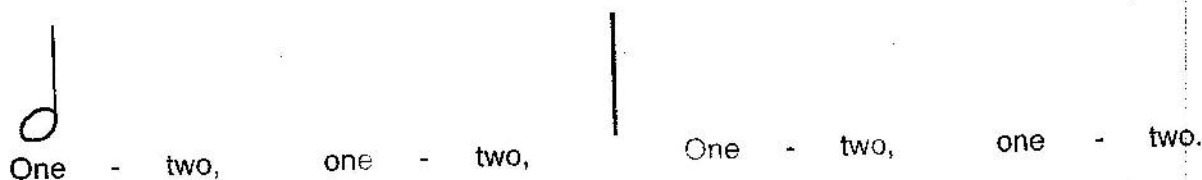


2. Add a **STEM** to each of the above notes. What kind of notes are they now? _____
3. Make each note **BLACK**. What kind of notes are they now? _____
4. Draw a **QUARTER NOTE** over each "one."



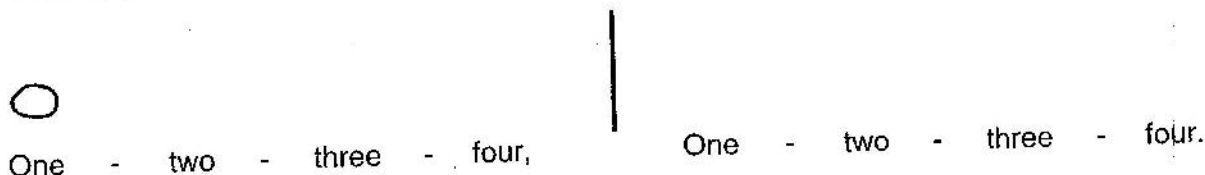
5. Count "one" or "quarter" for each quarter note, as you clap (or tap) **ONCE** for each note.

6. Draw a **HALF NOTE** over each "one."



7. Count "one-two" or "half-note" for each half note, as you clap (or tap) **ONCE** for each note.

8. Draw a **WHOLE NOTE** over each "one."



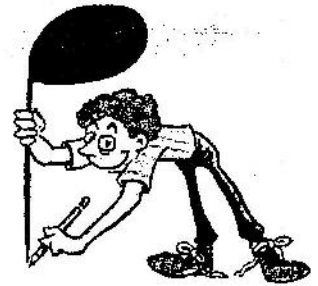
9. Count "one-two-three-four" or "whole-note-hold-down" for each whole note, as you clap (or tap) **ONCE** for each note.

NOTE TO TEACHERS: All rhythm exercises in this book are based on time signatures in which a quarter note gets one count.

Note-Stems and Bar Lines



Note-stems that point **UP**
are on the **RIGHT** side
of the note-head!



Note-stems that point **DOWN**
are on the **LEFT** side
of the note-head!

1. Add note-stems **POINTING UP**.



2. Add note-stems **POINTING DOWN**.



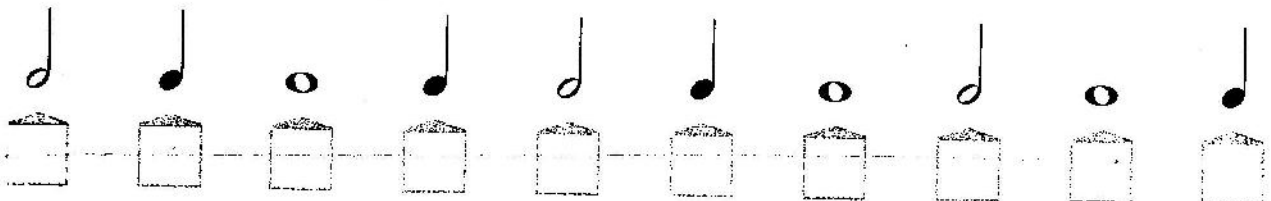
3. Draw a **BAR LINE** | dividing each of the above examples into **2 EQUAL MEASURES** (4 notes in each measure).

4. Draw a **DOUBLE BAR** || after the last note of each of the above examples.
Notice that the double bar has one **THIN** line and one **THICK** line. It is used at the **END**.

5. Play **EXAMPLE 1**. Use RH 3 on any key you choose. Count aloud as you play.
6. Play **EXAMPLE 2**. Use LH 3 on any key you choose. Count aloud as you play.

How Many Counts?

7. In the square below each note, write the number of counts the note receives.



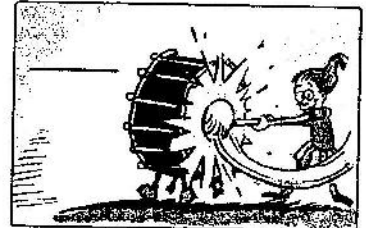
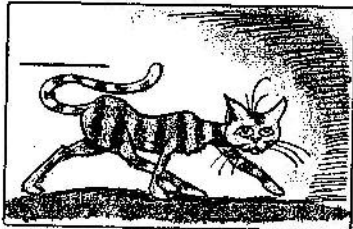
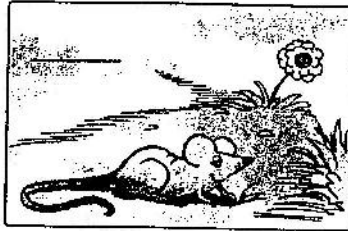
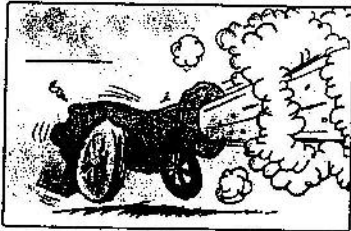
Dynamics . . are signs showing how **LOUD** or **SOFT** to play.

Assign with pages 12-13.

f (*forte*) = LOUD

p (*piano*) = SOFT

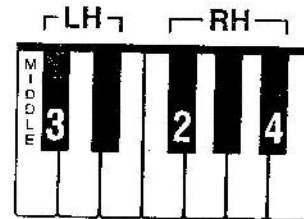
1. Some things sound ***f***, some ***p***. Which sign suits each of these pictures best?
Write the correct dynamic sign on the line in each picture.



The Bugler and the Echo

Assign with pages 14-15.

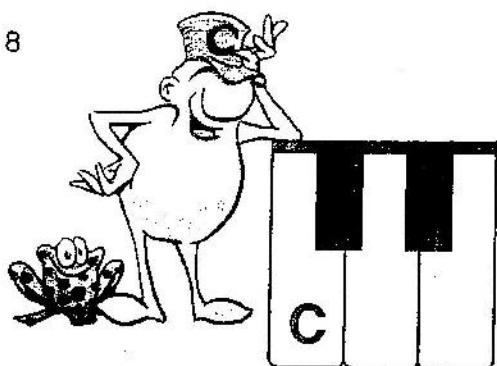
2. Read the words under the 1st line of music.
Write the dynamic sign you think is most correct in the box at the beginning.
3. Read the words under the 2nd line of music.
Write the dynamic sign you think is most correct in the box at the beginning.



☐ **RH 2** **4** **2** **RH 4** **2** **4** **2** **RH 2**
 Loud - ly the bu - gler sounds his re - frain, "Tah - tah!"
LH 3 **3**

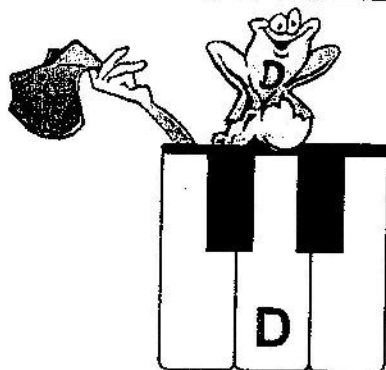
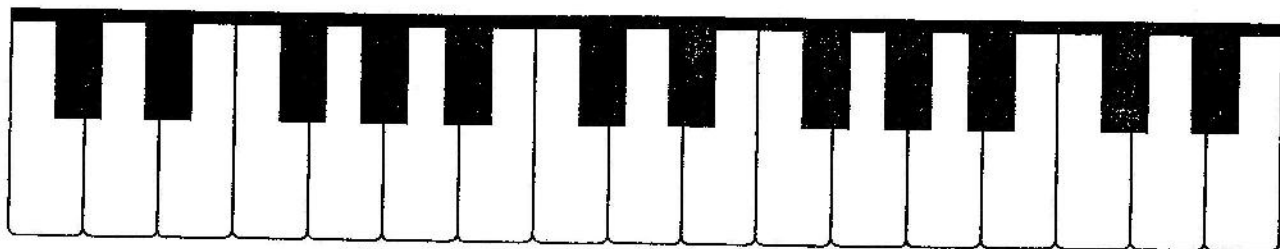
☐ **RH 2** **4** **2** **RH 4** **2** **4** **2** **RH 2**
 Soft - ly the ech - o sounds it a - gain, "Tah - tah!"
LH 3 **3**

4. Play **THE BUGLER AND THE ECHO**. Carefully observe the dynamics.



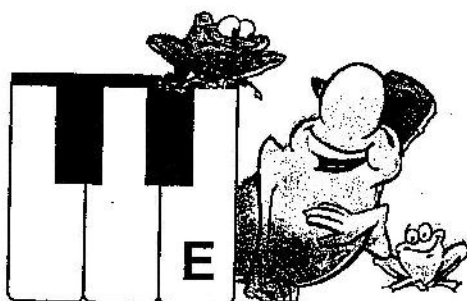
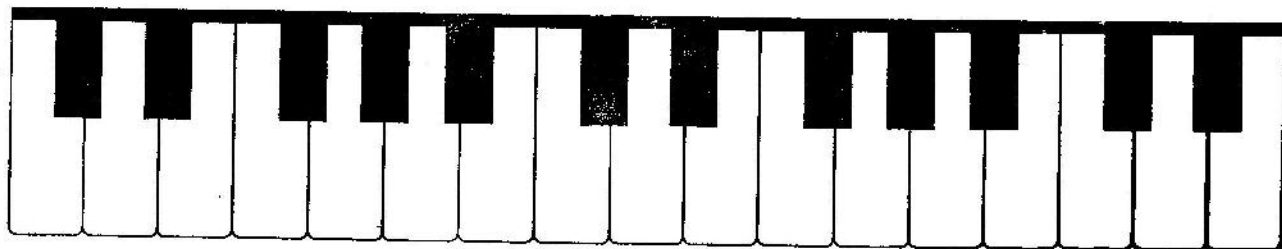
C is on the LEFT
of any
2 black key group!

4. Find all the **C**'s on this keyboard. Print a **C** on each one.



D is in the MIDDLE
of any
2 black key group!

5. Find all the **D**'s on this keyboard. Print a **D** on each one.



E is on the RIGHT
of any
2 black key group!

6. Find all the **E**'s on this keyboard. Print an **E** on each one.

